

A display House

Southern Breezes

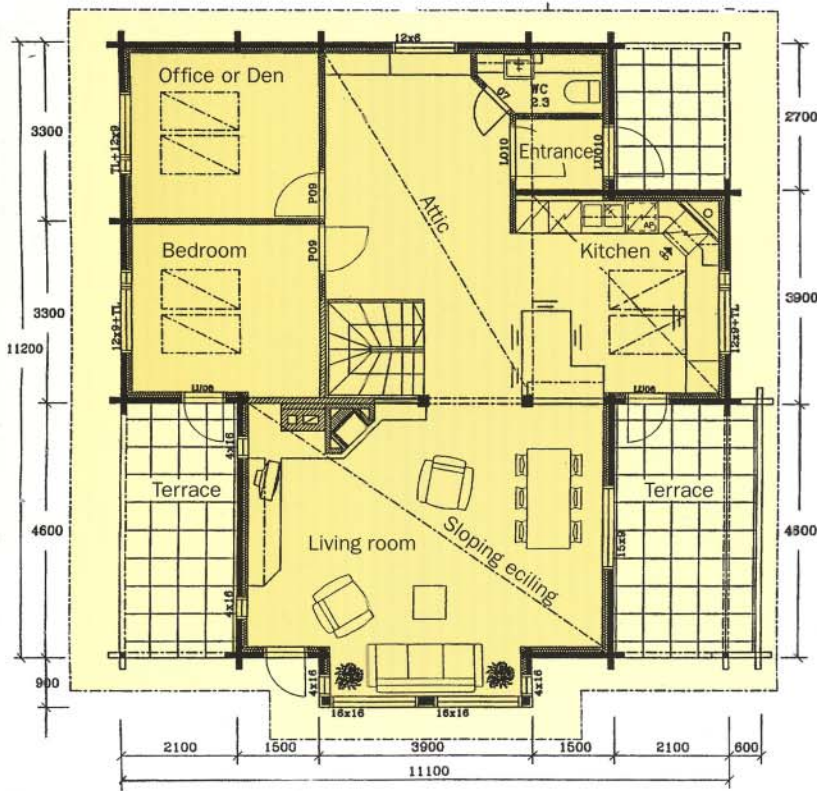
Ground floor 102 m²

Attic 20 m²

Terraces 28 m²

Total area 150 m²

The many attractive, "made-to-measure" variations we can offer in the creation of a "Southern Breezes 1" home make this the favoured choice of many of our customers. A log house of this type, pictured on the next page, is on permanent exhibition close to Helsinki.



Southern Breezes 2

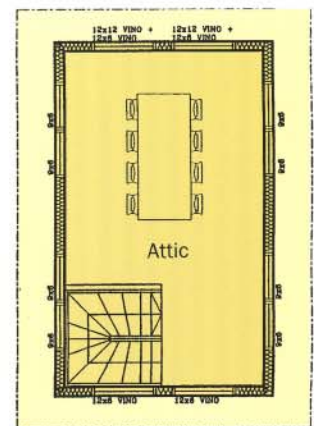
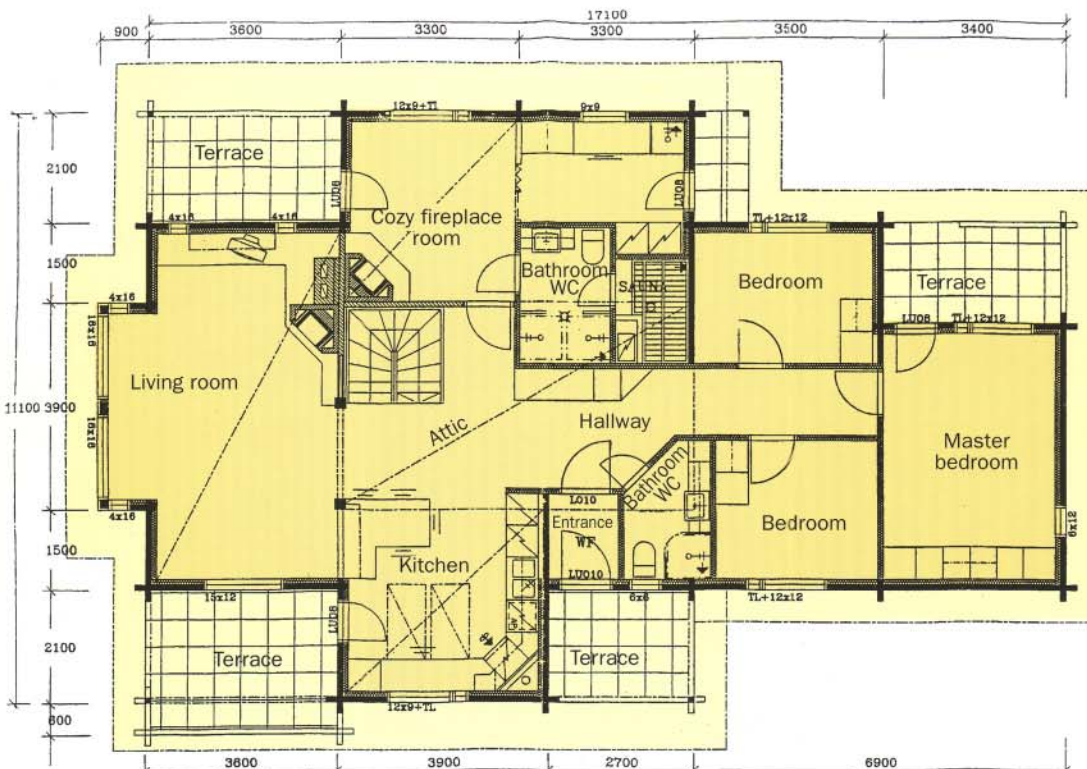
Ground floor 137 m²

Attic 20 m²

Terraces 31 m²

Total area 188 m²

In another adaption of the design, "Southern Breezes 2", there is ample room for a larger family - or several guests..



In both models there is an attic with 20 m² floor space.