

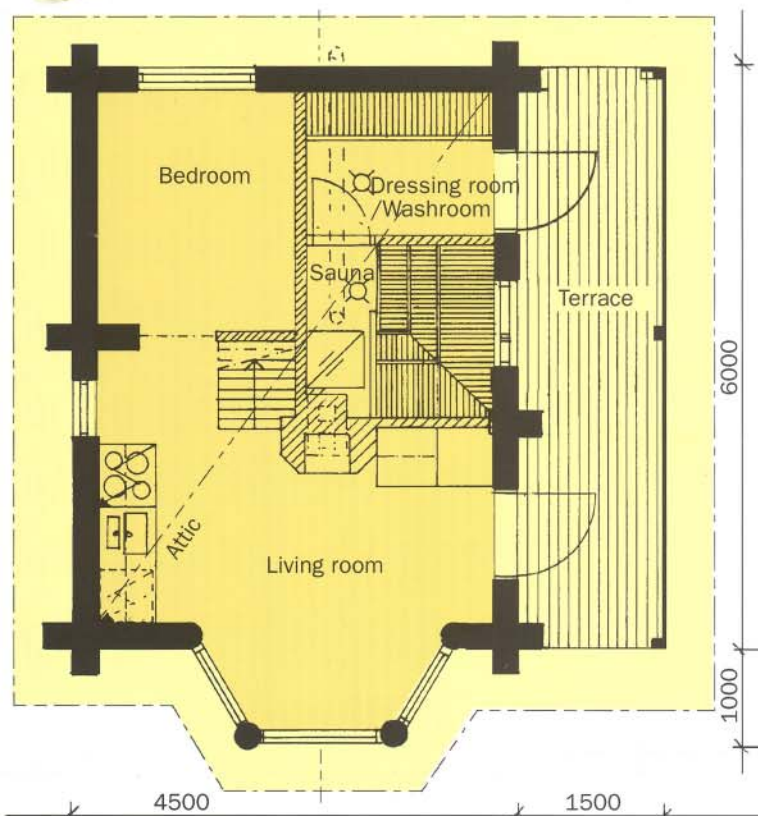
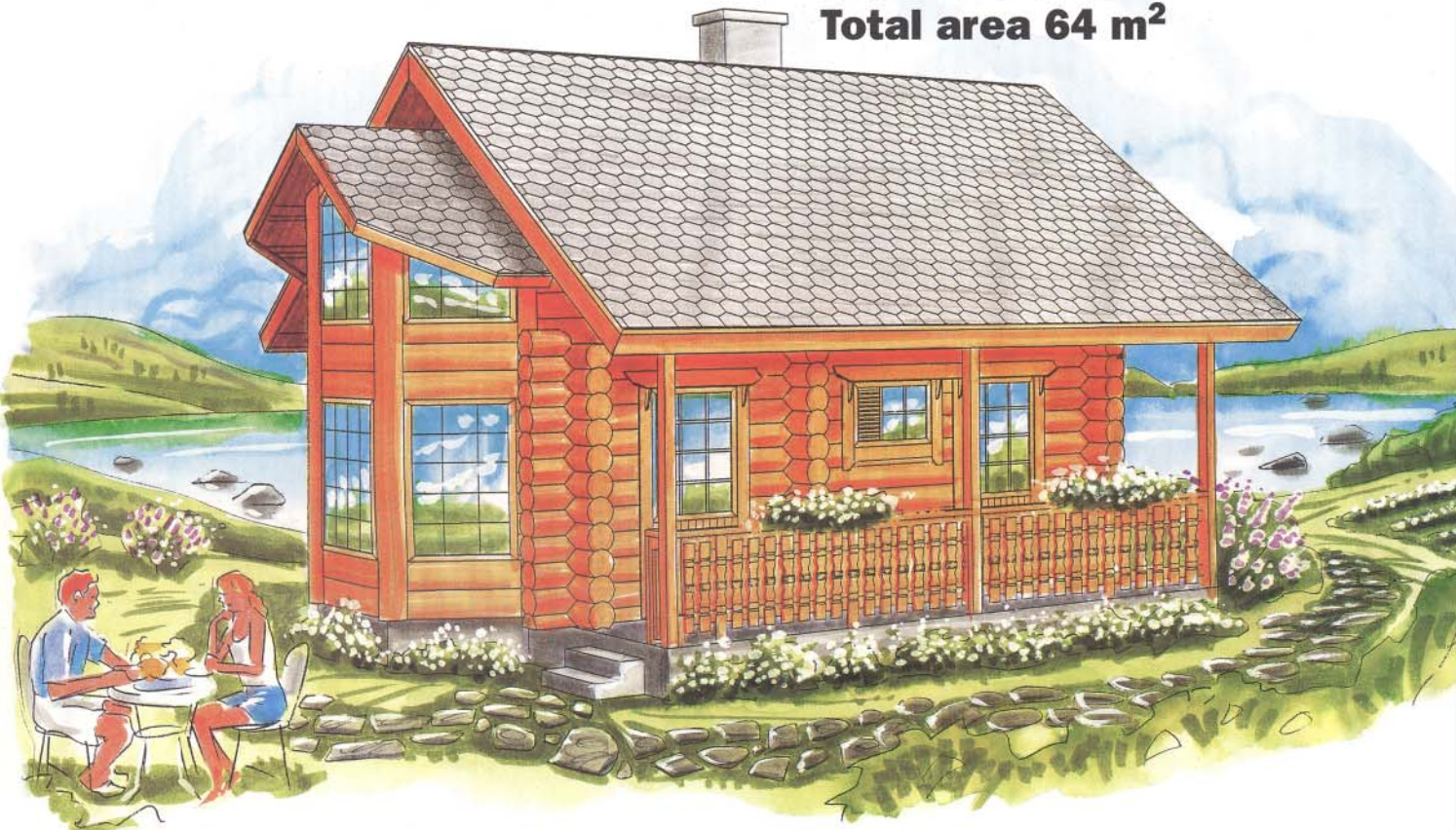
# Redwood

Living area •downstairs 29 m<sup>2</sup>

•upstairs 26 m<sup>2</sup>

Terrace 9 m<sup>2</sup>

Total area 64 m<sup>2</sup>



In "Redwood" a lot of space for living and to feel at home has been created on a two-storey model with a relatively small building area. The high bay is an unusual feature which gives new depth also upstairs, and the spacious walking height and a feeling of airiness are both pleasant surprises!